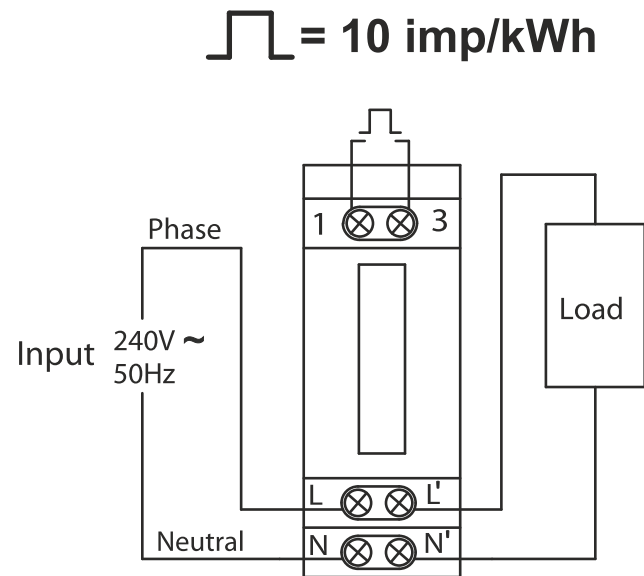
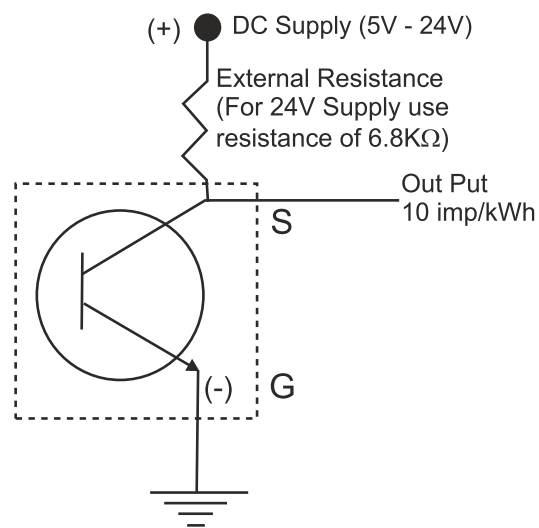


WIRING DIAGRAM



PULSE OUTPUT DIAGRAM

- Pulse Output is Open Collector Type.
- External Resistance is to be used between DC supply point & 'S' for Pulse output.
- For 24V DC use an external Resistance of 6.8 K Ohm.
- External Resistance value will vary depending upon the external voltage (5V-24V) being given by the user.



TECHNICAL SPECIFICATION

- Dimension 85 X 17.5 X 61 mm (L X W X H)
- Digit Height 6mm X 3mm
- IP Protection
 - Front Protection IP 50
 - Case Protection IP 20
- Current Rating
 - Basic Current 5A
 - Max. Current 20 A, 30 A
- Ref. Voltage 240 V(P to N)
- Ref. Frequency 50 Hz
- Starting Current 0.4% of basic current
- Operating Temp. -100 C to +600 C
- Overload Capacity 400% & 600% of Basic Current
- Power Consumption less than 1 W

DISPLAY PARAMETERS

- Auto Scroll- kWh
- Push Button-kWh, Voltage, Current & KW

MODEL AVAILABLE

SMM 01 in class 1.0 as per IEC 62053-21

MEASURES & DISPLAYS

- Cumulative Active Energy
- Phase to Neutral Voltage
- Instantaneous Current
- Instantaneous Power

This document is not a contract
As part of our continuous improvement processes the specifications are subject to change without prior notice

HEPL/SMEM/06-20

Single Module Energy Meter SMM 01



Some Unique Features :

- Display : Active Energy, Voltage, Current and Power
- For 1 Phase 2 Wire LT Network
- Pulse Output available
- Low Power Consumption
- Parameter lock feature
- DIN-rail mounting
- LCD Display



HPL Electric & Power Ltd

Corp. Office : Windsor Business Park, B-1D, Sector-10,
Noida, U.P. - 201301, INDIA
Tel.: +91-120-4656300, Fax: +91-120-4656333
Registered Office : 1/20, Asaf Ali Road, New Delhi-110002, INDIA.
E-mail : hpl@hplindia.com

Customer Care No. :
18004190198

www.hplindia.com

This document is not a contract • As part of our continuous improvement processes the specifications are subject to change without prior notice



METERING