

Reliable since 1965...



Plug in Relays - APA Series

**Universal &
Miniature Range**



**BCH
ELECTRIC
LIMITED**

Plug-in Relay - APA Series

APA Series of Plug-in Relays from BCH are suitable for wide range of industrial applications, from controlling small loads to those requiring high current carrying capacity. These relays has many inbuilt user friendly features like LED indication, Mechanical indicator & Manual testing / Latching facility, makes it ideal choice for almost every critical application of process and factory automation.

Miniature Series-APAM & APAN Type Plug-in Relay:

Contact arrangement: 2 & 4 Changeover contacts.

APAM Relay – Contact rating 6Amp Resistive at 250V AC /30V DC for 2 C/O & 4 C/O

APAN Relay - Contact rating 12 Amp Resistive at 250V AC /30V DC for 2 C/O

Control voltage : DC - 6V, 12V, 24V, 48V, 110V, 220V

: AC - 6V, 12V, 24V, 48V, 110V, 230V 50/60 Hz

Universal Series -APAU Type Plug-in Relay:

Contact arrangement : 2 & 3 Changeover contacts.

Contact rating 10Amp Resistive at 250V AC /30V DC for 2 C/O & 3 C/O

Control voltage : DC - 6V, 12V, 24V, 48V, 110V, 220V

: AC - 6V, 12V, 24V, 48V, 110V, 230V 50/60 Hz

FEATURES	BENEFITS
<ul style="list-style-type: none"> ▪ In built LED indication ▪ Built in mechanical indicator ▪ Latching facility ▪ 35mm Din Rail Mounting ▪ Low VA burden ▪ High Electrical Life ▪ Fast operating & releasing time ▪ CE Approved 	<ul style="list-style-type: none"> ▪ Relay status can be checked even in dark conditions ▪ Allows operator to see relay status in day light conditions ▪ Testing of relay / Panel can be done without energizing the control circuit ▪ Ease of installation & quick replacement ▪ Saves Energy Smaller size of control transformer ▪ True value for money ▪ Suitable for high switching frequency applications ▪ Better acceptability, specially for export customers

Applications:

- Industrial Control
- Automation Panels
- Textiles Machineries
- Process control Systems
- Instrumentation
- Telecommunications



Technical Specifications:



Sr. No.	DESCRIPTION	BCH Miniature Auxiliary Relay	BCH Miniature Auxiliary Relay	BCH Universal Auxiliary Relay
		APAM- 6AMP	APAN- 12AMP	APAU- 10AMP
1	Contact number & arrangement	4C/O ; 2C/O	2C/O	2C/O ; 3C/O
2	Contact Rating	Resistive load	6A @ 250V AC 6A @ 30V DC	12A @ 250V AC 12A @ 30V DC
		Inductive load	2A @ 250V AC (cosφ = 0.4) 3A @ 30V DC (L/R = 7 ms)	7.5A @ 250V AC (cosφ = 0.4) 5A @ 30V DC (L/R = 7 ms)
3	Contact material	AgNi		
4	Max. inrush current	15Amp	30Amp	30Amp
5	Coil Voltage (Un)	DC: 6V, 12V, 24V, 48V, 110V & 220V DC AC: 6V, 12V, 24V, 48V, 110V & 230V AC, 50/60 Hz		
6	Control voltage tolerance	≥ 0.8 x Un----- ≤ 1.1 x Un		
7	Coil surge protection	Optional		
8	coil consumption	1.2VA (AC), 1W (DC)		2.5VA AC (for 2C/O) /1.6VA (AC) for 3C/O, 1.3W (DC)
9	Electrical Life at res. Load	0.1 Million (100,000) at rated voltage		
10	Mechanical Life	>20 Million for DC Relays & >10 Million for AC relays		
11	Max. breaking capacity-AC1	1500VA	3000VA	2500VA
12	Ambient Temp	AC:(-40 to +55DegC),DC:(-40 to +70DegC)		
13	Max operating Frequency at rated load	1200 operations / hour		
14	Dielectric strength between contact & coil	2.5 KV AC		
15	Operating Time at nominal Voltage	10 ms		17mSec(AC);11mSec(DC)
16	Release Time at nominal Voltage	6 ms		28mSec(AC);11.5mSec(DC)
17	Max. weight	43 gms		80 gms
18	Dimensions (L x W x H)	28 x 21 x 38		35 x 35 x 49
19	Approvals	CE		
20	Suitable Socket - 2 C/O	APSM8 - 12A, 250V AC		APSU8 - 10A, 250V AC
21	Suitable Socket - 4 C/O	APSM14 - 6A, 250V AC	-	-
22	Suitable Socket - 3 C/O	-	-	APSU11 - 10A, 250V AC
23	IP Protection : Relay : Socket	IP40		
		IP20		

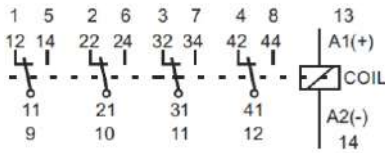
Coil Data:

COIL DATA	APAM / APAN				APAU			
Rated voltage (V)*	24V DC	110V DC	110V AC	230V AC	24V DC	110V DC	110V AC	230V AC
Coil resistance (+10%) at 20°C Ohm	640	13600	3880	17400	480	9000	1120	5600
Coil operating range :								
Min. (at 20°C) - (V)	19.2	88	88	184	19.2	88	88	184
Max. (at 20°C) - (V)	26.4	121	121	253	26.4	121	121	253

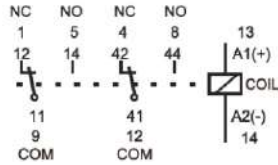
*Other coil voltages are available on request

APAM / APAN Miniature plug-in relay-2C/O & 4C/O:

PIN Configuration

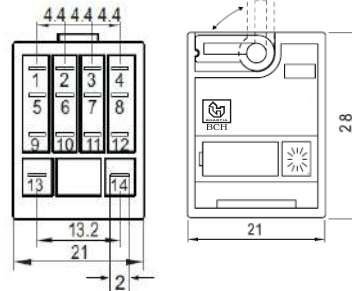


APAM Type plug in relay 4 C/O



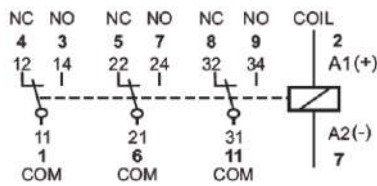
APAM / APAN Type plug in relay 2 C/O

Dimensions

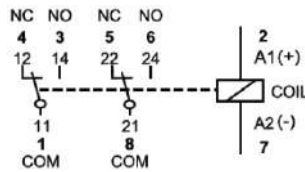


APAU Universal plug-in relay-2 C/O & 3 C/O:

PIN Configuration:

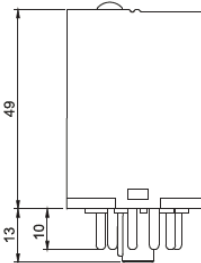
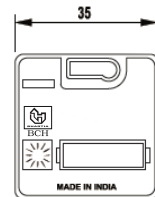
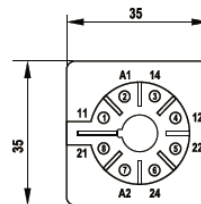


APAU Type plug in relay 3 C/O



APAU Type plug in relay 2 C/O

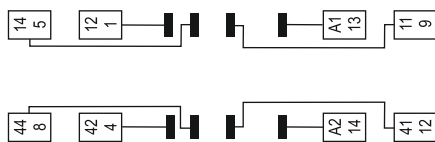
Dimensions



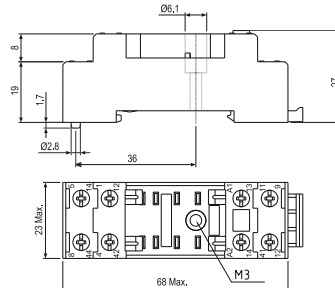
Sockets (with screw terminals) :

APSM8- 12A 250V AC 35 mm DIN rail mounting

Wiring diagram:

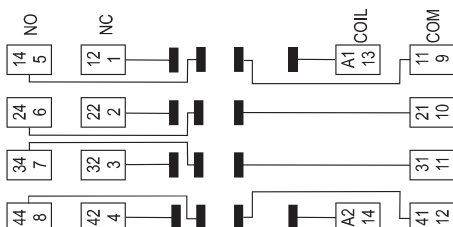


Dimensions: APSM8

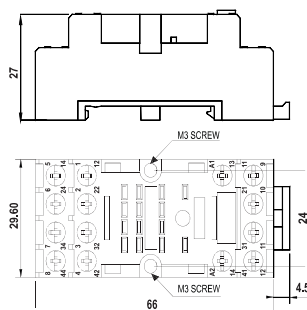


APSM14- 6A 250V AC 35 mm DIN rail mounting

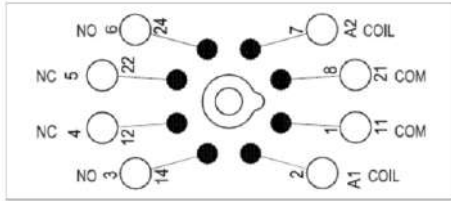
Wiring diagram:



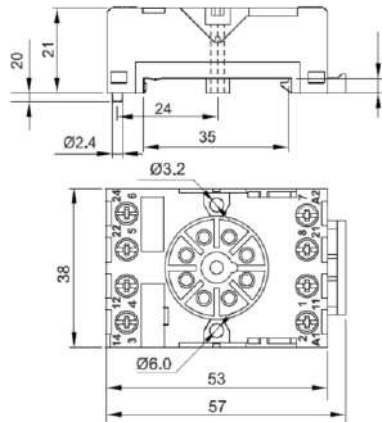
Dimensions: APSM14



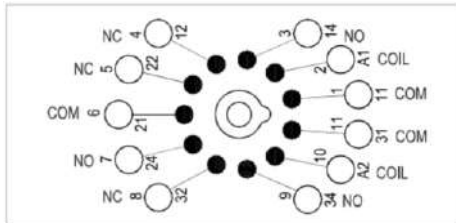
APSU8-10A 250V AC
35 mm DIN rail mounting
Wiring diagram:



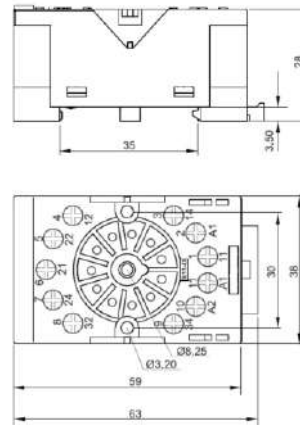
Dimensions: APSU8



APSU11-10A 250V AC
35 mm DIN rail mounting
Wiring diagram:



Dimensions: APSU11



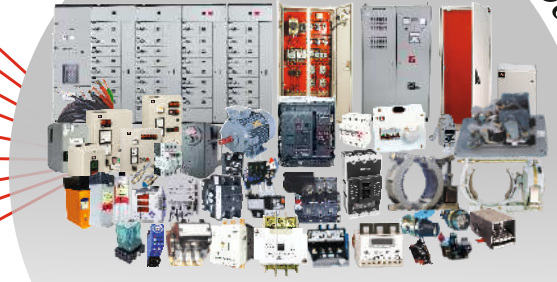
ORDERING INFORMATION:

<div style="display: flex; justify-content: space-around; align-items: center;"> <div style="background-color: #FFD700; padding: 5px; border: 1px solid black;">A</div> <div style="background-color: #FFD700; padding: 5px; border: 1px solid black;">P</div> <div style="background-color: #FFD700; padding: 5px; border: 1px solid black;">A</div> <div style="background-color: #FFD700; padding: 5px; border: 1px solid black;">-</div> <div style="background-color: #FFD700; padding: 5px; border: 1px solid black;">-</div> <div style="background-color: #FFD700; padding: 5px; border: 1px solid black;">-</div> <div style="background-color: #FFD700; padding: 5px; border: 1px solid black;">-</div> <div style="background-color: #0000FF; padding: 5px; border: 1px solid black;">LE</div> </div>	<div style="border: 1px solid black; padding: 5px; margin-bottom: 10px;"> Product series DIN rail mounting </div> <div style="border: 1px solid black; padding: 5px; margin-bottom: 10px;"> U: UNIVERSAL AUX. RELAY 10A M: MINATURE AUX. RELAY 6A N: MINATURE AUX. RELAY 12A </div> <div style="border: 1px solid black; padding: 5px; margin-bottom: 10px;"> Universal Aux. Relay : 2 : 2 Change Over 3 : 3 Change Over Miniature Aux. Relay : 2 : 2 Change Over 4 : 4 Change Over </div> <div style="border: 1px solid black; padding: 5px; margin-bottom: 10px;"> Nominal Voltage: DC: 6V, 12V, 24V, 48V, 110V & 220V DC AC: 6V, 12V, 24V, 48V, 110V & 230V AC, 50/60 Hz </div> <div style="border: 1px solid black; padding: 5px;"> A : AC Voltage D : DC Voltage </div>	<div style="border: 1px solid black; padding: 5px; margin-top: 100px;"> With LED indication </div>
--	--	--

Example: 2 Changeover, miniature relay 6Amp, 24V DC with LED Indication, cat code will be APAM224DLE

Power Control Products
Starters & Submersible Pump Starters
Industrial Enclosures
Industrial Products
Wires & Cables
Motor Control Products
Power Bus Duct
Customised Solution
Automation

a strong commitment to serve better always ...



BCH ELECTRIC LIMITED



www.bchindia.com



1800-103-9262

customercare@bchindia.com

Visit us at : www.bchindia.com

Corporate Office : 1105, New Delhi House, 27, Barakhamba Road, New Delhi-110 001 Tel. : 91-11- 43673100

CIN : U31103WB1965PLC026427, **Customercare No.** 1800-103-9262, **E-mail :** marketing@bchindia.com

Registered Office : Block 1E, 216, Acharya Jagadish Chandra Bose Road, Kolkata - 700 017

Works 1 : 20/4, Mathura Road, Faridabad -121 006 (Haryana) Tel. : 0129-4063000/4293000 Fax : 0129-2304016

Works 2 : 64-68, Sector-7, IIE, Pant Nagar, Rudrapur, Udham Singh Nagar - 263 153 (Uttarakhand) Tel. : 05944-250214/16 Fax : 05944-250215

Sales Offices :

Ahmedabad

401, Shilp Zeveri,
Beside Shyamal Iconic,
Above Westside,
Shyamal Cross Road,
Ahmedabad - 380015
E-mail : ahmedabad@bchindia.com

Bangalore

2nd Floor, 130/5,
K.H. Road (Double road),
Bangalore - 560 027
Tel. : 080-41144879 / 22236759
E-mail : bangalore@bchindia.com

Bhubaneswar

Mallick Commercial
Complex Plot No. : A/69, unit - 3
Bhubaneswar - 751 001
Tel. : 0674-2380988
E-mail : bhubaneswar@bchindia.com

Chandigarh (Panchkula)

SCO -270, 2nd Floor,
Sector-16, Panchkula
Haryana-134 113
Tel. : 0172-5078957 / 5049905
E-mail : chandigarh@bchindia.com

Chennai

Flat No. 3A, 3rd Floor,
Sree Apartments,
No.508, TTK Road,
Alwarpet, Chennai 600 018
Tel. : 044-24337046, 24337047
E-mail : chennai@bchindia.com

Coimbatore

87, Dr. Nanjappa Road,
Coimbatore - 641 018
Tel. : 0422-2305311 / 2302599
E-mail : coimbatore@bchindia.com

Delhi 1

801, Akash Deep Building,
26A, Barakhamba Road,
New Delhi - 110 001
Tel. : 011-23313878 / 43518200
E-mail : delhi1@bchindia.com

Delhi 2

710, Deepali Building, 92
Nehru Place, New Delhi - 110 019
Tel. : 011-45720334
E-mail : delhi2@bchindia.com

Dehradun

8, Co-operative Industrial Estate,
Patel Nagar, Dehradun-248001
E-mail : dehradun@bchindia.com

Faridabad

20/4, Mathura Road,
Faridabad - 121 006 (Haryana)
Tel. : 0129-4293009
E-mail : faridabad@bchindia.com

Hyderabad

1-8-303/48/13/102, Arya One,
2nd Floor, P. G. Road,
Secunderabad - 500 003
Tel. : 040-66206263/27890306
Fax : 040-66207273
E-mail : hyderabad@bchindia.com

Indore

330-331, Indraprastha Tower,
3rd Floor, 6, M.G. Road,
Indore - 452 001
Tel. : 0731-2510011 / 2510012
E-mail : indore@bchindia.com

Jaipur

25, Hathroi, Gopalbari,
Jaipur - 302 001
Tel. : 0141-2363521
E-mail : jaipur@bchindia.com

Jamshedpur

3rd Floor, Aastha Trade Centre,
'O' Road, Bistupur,
Jamshedpur - 831 001
Tel. : 0657-2321097/2321481
E-mail : jamshedpur@bchindia.com

Kolkata

Block 1E, 216,
Acharya Jagadish Chandra Bose Road,
Kolkata - 700 017
Tel. : 033-22871728 / 46021884
E-mail : kolkata@bchindia.com

Lucknow

Shop no. 3, First Floor, Tower T-10,
Millennium Place IBB - 2,
Sushant Golf City, Sultanpur Road,
Lucknow, U.P. - 226030
E-mail : lucknow@bchindia.com

Ludhiana

S.C.O.- 18, 2nd Floor,
Feroze Gandhi Market,
Ludhiana - 140 001
Tel. : 0161-5021807/5022808
E-mail : ludhiana@bchindia.com

Mumbai

A-151, Mittal Tower,
Nariman Point,
Mumbai - 400 021
Tel. : 022-22822947/22850162
Fax : 022-22822858
E-mail : mumbai@bchindia.com

Pune

8, Sarosh Bhavan,
16-B/1, Dr. Ambedkar Road,
Pune - 411 001
Tel. : 020-41210002
E-mail : pune@bchindia.com

Raipur

6th Floor, Office No. 607,
Babylon Capital, Near Oswal
Petrol Pump, VIP Chowk,
G.E. Road, Raipur - 492 006
Tel. : 0771-4045053
E-mail : raipur@bchindia.com

Vadodara

301, Third Floor, "Florence Classic",
Babylon Capital, Near Oswal,
Near Cow Circle, Akota, Vadodara - 390 020
Tel. : 0265-2345068/2345069
Telefax : 0265-2345068,
E-mail : vadodara@bchindia.com

Other Branch Locations

Cochin : cochin@bchindia.com, **Guwahati :** guwahati@bchindia.com, **Vishakapatnam :** vizag@bchindia.com, **Surat :** surat@bchindia.com, **Trichy :** Trichy@bchindia.com

Resident Engineer Locations

Anantapur	Jodhpur	Madurai	Rajkot	Siliguri
Aurangabad	Jalandhar	Muzaffarnagar	Rajahmundry	Tirunelveli
Bhopal	Kanpur	Nagpur	Ranchi	Udaipur
Calicut	Katni	Nashik	Rourkela	Vapi
Gurgaon	Kharagpur	Nanded	Rudrapur	Vijayawada
Hosapate	Kota	Patna	Salem	Warangal
Hubli	Kolhapur	Puducherry	Satna	Yamuna Nagar

Since product improvement is a continuous process, the data furnished in this brochure may undergo revision without prior notice.