

*An enclosure solution for **IT & Telecom Industry***

**technoRACKS**



**BCH ELECTRIC LIMITED**



BCH Electric Limited (An ISO 9001-2008 company) is a leading control & switchgear player in India. Apart from this it is one of the largest manufacturers of enclosures systems in India offering products that have application in Telecom, IT, Electrical & Instrumentation Industry.

These Enclosures / Racks are manufactured on latest series of Amada make high accuracy CNC machines.

BCH Electric Limited Techno RACK are ideally suitable for Servers, Networking & allied equipments. BCH also offers enclosures of IP 55 & IP 66 grade.

BCH Electric Limited has one of the most modern state-of-art manufacturing facilities with latest high-grade CNC Turret Punch Press (TPP) machines. The powder coating plant with pre-treatment using spray phosphating and automatic precipitators is of latest technology providing better corrosion resistance in all environments. The Polyurethane (PU) gasket laid by CNC machine ensures better Ingress Protection (IP) over a longer period. This results in huge production capacities with consistency in production & quality.

Company's proven range of Industrial Control, Power Distribution, Automation, Brakes, Starters and mass market products has, over the years, become a benchmark with the brand BCH gaining recognition and increasing its equity as a reputed manufacturer of quality electrical products.

Most of the products are "CE" marked and conform to latest national and international standards.

BCH Electric Limited, with its corporate office at New Delhi, has 21 Sales Offices, 66 Resident Engineer locations, over 450 dealers and extensive sub dealer network to serve customers better.

BCH Electric Limited is committed to achieve leadership position in the industry by creating technical and marketing advantage to consistently meet and exceed customer expectations.



# *techno***RACKS**

An enclosure solution for IT & Telecom Industry

BCH synonymous with quality & timely delivery has the technical expertise and engineering capability, to produce hi-tech enclosures, for IT and Telecom industry, vital for today's needs.

- Latest Technology : Modular, reliable and flexible.
- Innovative Design : Aesthetics, consistent development & great feel.
- Optimum Production : Speed, precision, competitive pricing.
- Top Quality : Perfection, consistency, higher IP protection.

These enclosures consist of a rugged structure that protects your equipment from the stresses of vibration.

**High grade powder coating plant with tri-cationic spray phosphating and automatic powder precipitators provides uniform and durable surface finish that enhances corrosion resistance.**

**Polyurethane gasket foamed-in, on the covers, ensures optimum ingress protection and life long durability.**

## Why *techno***RACKS** ?

- Techno RACKs offer the most premium features and design that's available in the market.
- Racks are manufactured in the most hi-tech & modern manufacturing facilities in the country.
- Quality control is exercised at every workstation during production ensure excellent quality product.
- High quality pre-treatment with 11-tank spray phosphating results in high resistance to corrosion.
- Quality testing is done on all enclosure products from start to finish.
- Latest CNC machines used in production, ensure high accuracy and desired quality.
- World-class PU gasketing machines, which have 10 times better quality in comparison to normal gaskets, are only used.

# ENCLOSURES FOR **NETWORKING AND ALLIED EQUIPMENTS**



## **WALLMOUNTING** | ENCLOSURE/CABINET

The "Ready to use" enclosures make it more easy for customers. The sleek look with sturdy construction and vents for air circulation means that these enclosures can be used for various wall mounting application.

### **Usable Features**

- Lockable & removable front glass door.
- Better cable entry / exit provision in top and bottom covered by rubber grommets.
- Vented top and side panels are provided with vents.
- Provision for earthing available in the cabinets.
- Heavy duty Welded structure.
- High quality pretreatment (Spray phosphating) for high rate of resistance to corrosion.
- Attractive, durable and high quality powder coating.
- Choice of colours available.

## Application

- Networking equipments that include Data Switches, Routers, Network Cabling, Fiber Termination Unit etc.
- Compatible for mounting switches of CISCO, Dlink, Avaya etc.
- Communication devices like Rack mountable EPABX etc.
- Other Networking allied equipments.

## Core Specifications

- 1-pair of adjustable equipment mounting rails.
- Fan housing provision in the top. Fans / Fan-tray doesn't occupy usable "U" space of the cabinets.
- Special type of Wall-mounting hardware.
- One set (10 nos. of cage-nuts and screws) of hardware for mounting equipment.
- Provision for earthing available in the cabinets.

Techno Racks wall mounting enclosures are available in two models:

### XE WALL-MOUNT CABINET

Description	Catalogue code
6U X 550 X 400	BIL-W-6-5504
9U X 550 X 400	BIL-W-9-5504

#### External Dimensions

Wall-mount cabinet	Height	Width	Depth
6U	360	550	400
9U	490	550	400

### XP WALL-MOUNT CABINET

Description	Catalogue code
6U X 600 X 500	BIL-W-6-6050
9U X 600 X 500	BIL-W-9-6050
12U X 600 X 500	BIL-W-12-6050

#### External Dimensions

Wall-mount cabinet	Height	Width	Depth
6U	360	600	500
9U	490	600	500
12U	625	600	500
15U	725	600	500

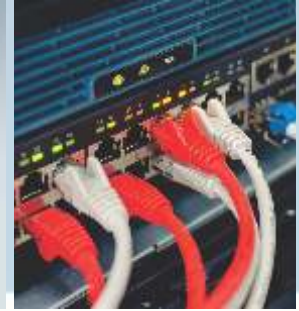
## Accessories

Techno RACKs wide range of accessories provide security, serviceability, manageability and reliable functioning of installed networking equipment and also offers possible flexible solutions.

Accessories	Catalogue code
1U Horizontal Cable Manager	BIL-A-HCM-1U
Horizontal Power Strip(5Amp)	BIL-A-HPS-5AMP
1-Fan	BIL-A-SF
Fan-tray with 2-Fans	BIL-A-FHU-2 fans
1U Cantilever Shelf	BIL-A-CS-1
Wall-mounting hardware	Default with the cabinet
Equipment mounting hardware	Default with the cabinet
1-Pair of equipment mounting rails	Default with the cabinet

## Standard scope of supply

- Wallmount cabinet.
- 1-Pair of Equipment mounting rails.
- 1-Set of Equipment mounting hardware (Captive hardware).
- 1-Set of Wall-mounting hardware.
- Wall-drilling template.



## NETWORKING RACKS

BCH's floor standing racks are the most versatile rack platform. It enables easy mounting of the components to fit into your applications. From consistent Steel profiles to precision-engineered panels with the highest tolerances for fit and finish in the industry, the racks are simply the finest Indian modular racks available; in big range of sizes for single and baying applications.

The Networking racks come with front glass door, rear door and side covers partially perforated for cross flow of ambient air. The recess rails give flexibility of placing the 19" channels from front to rear at a pitch of 25mm.

Techno RACKs offers following range of networking racks meeting flexible market requirement :

### Technical Specifications

Rack/Dimensions	Width (in mm)	Height (in mm)	Depth (in mm)	Catalogue Code
24U	600	1230	600	BIL-N-062406
24U	600	1230	800	BIL-N-062408
24U	800	1230	600	BIL-N-082406
24U	800	1230	800	BIL-N-082408
30U	600	1500	600	BIL-N-063006
30U	600	1500	800	BIL-N-063008
30U	800	1500	600	BIL-N-083006
30U	800	1500	800	BIL-N-083008
36U	600	1750	600	BIL-N-063606
36U	600	1750	800	BIL-N-063608
36U	800	1750	600	BIL-N-083606
36U	800	1750	800	BIL-N-083608
42U	600	2020	600	BIL-N-064206
42U	600	2020	800	BIL-N-064208
42U	800	2020	600	BIL-N-084206
42U	800	2020	800	BIL-N-084208
42U	800	2020	1000	BIL-N-084210

## Key Features

- Techno RACKs offer flexible bolted design. The structure is heavy duty.
- Flexible equipment mounting rails.
- Provision for Fan housing unit (FHU) at the top. Mounting FHU doesn't occupy precious "U" space.
- Lockable & removable Front Glass (Toughened) door with perforation.
- Lockable & removable perforated (Air-max) rear door.
- Lockable and removable side panels.
- Better cable management provision in top and bottom.

## Standard Scope of Supply

Floor standing rack with Front Glass door, Rear perforated door, Side panels, 2-pair of equipment mounting rails, Equipment mounting hardware (Captive H/W)

## Accessories

### HORIZONTAL CABLE MANAGER

Description	Catalogue Code
Hoz Cable Mgr, 1U	BIL-A-HCM-1U
Hoz Cable Mgr, 2U	BIL-A-HCM-2U

### VERTICAL CABLE MANAGER

Description	Catalogue Code
Vert Cable Mgr, 24U	BIL-A-VCM-24U
Vert Cable Mgr, 30U	BIL-A-VCM-30U
Vert Cable Mgr, 36U	BIL-A-VCM-36U
Vert Cable Mgr, 42U	BIL-A-VCM-42U
Vert Cable Mgr, 45U	BIL-A-VCM-45U

### REDUCING CABLE MANAGER

Description	Catalogue Code
Red. Cable Mgr, 24U	BIL-A-RCM-24U
Red. Cable Mgr, 30U	BIL-A-RCM-30U
Red. Cable Mgr, 36U	BIL-A-RCM-36U
Red. Cable Mgr, 42U	BIL-A-RCM-42U
Red. Cable Mgr, 45U	BIL-A-RCM-45U

### CANTILEVER SHELF

Description	Catalogue Code
Shelf for 1U size	BIL-A-CS-1
Shelf for 2U size	BIL-A-CS-2

### FHU (Fan Housing Unit)

Description	Catalogue Code
Single Fan	BIL-A-SF
Fan unit with 2 fans	BIL-A-FHU-2 Fans
Fan unit with 4 fans	BIL-A-FHU-4 Fans

**BLANK PANELS**

Description	Catalogue Code
Blank Panel, 1U	BIL-A-BP-1U
Blank Panel, 2U	BIL-A-BP-2U
Blank Panel, 3U	BIL-A-BP-3U
Blank Panel, 5U	BIL-A-BP-5U

**BAYING KIT**

Description	Catalogue Code
Baying Kit	BIL-A-BK

**FIXED SHELF**

Description	Catalogue Code
Fixed shelf, 600mm(D)	BIL-A-FS-06
Fixed shelf, 800mm(D)	BIL-A-FS-08

**KEY BOARD TRAY**

Description	Catalogue Code
Key Board Tray	BIL-A-KB-06

**EQUIPMENT SUPPORT ANGLE**

Description	Catalogue Code
Support angle, 600 (D)	BIL-A-ESA-06
Support angle, 800 (D)	BIL-A-ESA-08

**SLIDING SHELF**

Description	Catalogue Code
Sliding shelf, 600 (D)	BIL-A-SS-06
Sliding shelf, 800 (D)	BIL-A-SS-08

**POWER DISTRIBUTION MANAGEMENT**

Description	Catalogue Code
Horizontal power Strips (5AMP)	BIL-A-HPS-5AMP
Horizontal power Strips (15AMP)	BIL-A-HPS-15AMP
Vertical Power Strips (10 - point 15AMP)	BIL-A-VPS-15AMP
Earth Continuty kit	BIL-A-ECT

**STABILITY MANAGEMENT**

Description	Catalogue Code
Castors	BIL-A-CAS
Leveling feet	BIL-A-LF





## OPEN FRAME RACKS

(2-Post Racks)



Techno RACKs 2-post open-frame racks are made considering special feature requirements of Call Centres.

### Usable features

- Bolted or Flat pack design.
- Better provision for cable routing.
- Holes for cable routing are layered by rubber lining to protect any wear and tear on the data and power cables.
- Comprehensive range of accessories (Shelves, Cable managers, Power distribution management, grouting kit, grounding kit etc) are available to complement systematic networking arrangement.

### Application

- Best solution for the Call centres and data centres.
- Can house adequate quantity of Switches, Hubs, Routers and Modems etc.
- Compatible to racking solution for the networking & allied equipments of all leading companies.
- Desktop pc servers can also be housed in the Techno RACKs 2-Post racks.

### Technical Specifications

Material of construction : Pillars=>1.6/2mm CRCA Steel Sheet

Base => 3mm CRCA

Powder coat : High quality of corrosion pre-treatment and powder coating to give high rate of resistance.

Various models of 2-Post open frame racks are as follows :

Dimensions (W x H in mm)	Catalogue Code
36U	IT-OF-061600
45	IT-OF-062200

Accessories: Techno RACK offers wide range of accessories for open frame racks, as follows :

**HORIZONTAL CABLE MANAGER**

Description	Catalogue Code
Hoz Cable Mgr, 1U	BIL-A-HCM-1U
Hoz Cable Mgr, 2U	BIL-A-HCM-2U

**VERTICAL CABLE MANAGER**

Description	Catalogue Code
Vert Cable Mgr, 24U	BIL-A-VCM-24U
Vert Cable Mgr, 30U	BIL-A-VCM-30U
Vert Cable Mgr, 36U	BIL-A-VCM-36U
Vert Cable Mgr, 42U	BIL-A-VCM-42U
Vert Cable Mgr, 45U	BIL-A-VCM-45U

**REDUCING CABLE MANAGER**

Description	Catalogue Code
Red. Cable Mgr, 24U	BIL-A-RCM-24U
Red. Cable Mgr, 30U	BIL-A-RCM-30U
Red. Cable Mgr, 36U	BIL-A-RCM-36U
Red. Cable Mgr, 42U	BIL-A-RCM-42U
Red. Cable Mgr, 45U	BIL-A-RCM-45U

**CANTILEVER SHELF**

Description	Catalogue Code
Shelf for 1U size	BIL-A-CS-1
Shelf for 2U size	BIL-A-CS-2

**POWER DISTRIBUTION MANAGEMENT**

Description	Catalogue Code
Horizontal Power Strips (5-AMP), 6 Point	BIL-A-HPS-5AMP

# ENCLOSURES FOR **SERVERS AND ALLIED EQUIPMENTS**



## **SERVERS** | RACKS

Server racks protect hardware and software, ensuring adequate ventilation for servers to allow uninterrupted operation at a constant temperature. Techno RACKs satisfies these basic and mandatory requirements. Our elegant, robust server rack structure has appropriate suitability for rack mounting heavy-duty servers. The vents for airflow have been given top attention for the cross flow of ambient air to cool down the servers.

Provision for ventilation is given from front to rear and roof as well.

Floor standing racks are used to keep servers and other active IT equipments in systematic, secure and consolidated manner.

**Technical Specification**

Racks/Dimensions	Width (in mm)	Height (in mm)	Depth (in mm)	Catalogue Code
24U	600	1230	900	BIL-S-062409
24U	600	1230	1000	BIL-S-062410
30U	600	1500	900	BIL-S-063009
30U	600	1500	1000	BIL-S-063010
36U	600	1750	900	BIL-S-063609
36U	600	1750	1000	BIL-S-063610
42U	600	2020	900	BIL-S-064209
42U	600	2020	1000	BIL-S-064210
42U	800	2020	1000	BIL-S-084210
45U	600	2150	900	BIL-S-064509
45U	600	2150	1000	BIL-S-064510

**Key Features**

- Techno RACKs offer flexible bolted design. The structure is heavy duty.
- Adjustable equipment mounting rails.
- Provision for fan housing unit (FHU) in the top. Mounting FHU doesn't occupy precious "U" space.
- Lockable & removable front glass (Toughened) door with perforation.
- Lockable & removable perforated (Air-max) rear door.
- Lockable and removable side panels.
- Cable management provision at top and bottom.

**Standard Scope of Supply**

Floor standing rack with Front Glass door, Rear perforated door, Side panels, 2-pair of equipment mounting rails, Equipment mounting hardware (Captive H/W)

**Accessories**

BCH offers comprehensive range of accessories to meet all possible & feasible rack solutions. List given below :

**HORIZONTAL CABLE MANAGER**

Description	Catalogue Code
Hoz Cable Mgr, 1U	BIL-A-HCM-1U
Hoz Cable Mgr, 2U	BIL-A-HCM-2U

**VERTICAL CABLE MANAGER**

Description	Catalogue Code
Vert Cable Mgr, 24U	BIL-A-VCM-24U
Vert Cable Mgr, 30U	BIL-A-VCM-30U
Vert Cable Mgr, 36U	BIL-A-VCM-36U
Vert Cable Mgr, 42U	BIL-A-VCM-42U
Vert Cable Mgr, 45U	BIL-A-VCM-45U

**REDUCING CABLE MANAGER**

Description	Catalogue Code
Red. Cable Mgr, 24U	BIL-A-RCM-24U
Red. Cable Mgr, 30U	BIL-A-RCM-30U
Red. Cable Mgr, 36U	BIL-A-RCM-36U
Red. Cable Mgr, 42U	BIL-A-RCM-42U
Red. Cable Mgr, 45U	BIL-A-RCM-45U

## CANTILEVER SHELF

Description	Catalogue Code
Shelf for 1U size	BIL-A-CS-1
Shelf for 2U size	BIL-A-CS-2

## FHU (Fan Housing Unit)

Description	Catalogue Code
Single Fan	BIL-A-SF
Fan unit with 2 Fans	BIL-A-FHU-2 Fans
Fan unit with 4 Fans	BIL-A-FHU-4 Fans

## BLANK PANELS

Description	Catalogue Code
Blank Panel, 1U	BIL-A-BP-1U
Blank Panel, 2U	BIL-A-BP-2U
Blank Panel, 3U	BIL-A-BP-3U
Blank Panel, 5U	BIL-A-BP-5U

## BAYING KIT

Description	Catalogue Code
Baying Kit	BIL-A-BK

## FIXED SHELF

Description	Catalogue Code
Fixed shelf, 900mm(D)	BIL-A-FS-09
Fixed shelf, 1000mm(D)	BIL-A-FS-10

## KEY BOARD TRAY

Description	Catalogue Code
Key Board Tray	BIL-A-KB-06

## EQUIPMENT SUPPORT ANGLE

Description	Catalogue Code
Support angle, 600 (D)	BIL-A-ESA-09
Support angle, 800 (D)	BIL-A-ESA-10

## SLIDING SHELF

Description	Catalogue Code
Sliding shelf, 600 (D)	BIL-A-SS-09
Sliding shelf, 800 (D)	BIL-A-SS-10

## POWER DISTRIBUTION MANAGEMENT

Description	Catalogue Code
Horizontal Power Strips (5 AMP)	BIL-A-HPS-5AMP
Horizontal Power Strips (15 AMP)	BIL-A-HPS-15AMP
Vertical Power Strips (10-Points 5/15AMP)	BIL-A-VPS-15AMP
Earth Continuty Kit	BIL-A-ECT

## STABILITY MANAGEMENT

Description	Catalogue Code
Castors	BIL-A-CAS
Leveling feet	BIL-A-LF

# ENCLOSURES FOR **TELECOM AND ALLIED EQUIPMENTS**



## **ETSI** RACKS

BCH also offers racks as per the ETSI standard. These racks are mainly used for telecom application. They are available in 2200mm height with 2 depths of 300mm and 600mm.

Dimensions (W x H x D in mm)	Catalogue Code
600 x 2200 x 300	ITE-062203
600 x 2200 x 600	ITE-062206

### Standard configuration:

- Standard configuration includes TOP, Bottom and integrated side panels (for 600mm depth).
- 1-Pair of ETSI equipment mounting rail.
- External height is 2200mm with width of 600mm.
- ETSI racks are available in 300mm & 600mm depth.
- ETSI racks are available with comprehensive range of accessories.
- Provision for earthing.

### Material of construction

Top : 1.6mm CRCA Steel Sheet  
 Bottom : 1.6mm CRCA Steel Sheet  
 Side-panels : 1.6mm CRCA Steel Sheet

### Accessories

Description	Catalogue Code
Vertical Cable Mgr, 42U	BIL-A-VCM-42U
Red. Cable Mgr, 42U	BIL-A-RCM-42U
Baying Kit	BIL-A-BK
Earthing Continuity Kit	BIL-A-ECT

## CUSTOMISED RACKS



### Customized racks for various applications

- Power supply
- BTS
- Outdoor enclosures
- MDF / DDF
- DLC
- UPS / BATTERY RACK

Switchgear & Control Gear

Automation

Enclosures

Electric Motors

Wires & Cables

Reactive Power Management

Brakes and Crane Control

Custom Build Products

a strong commitment to serve better always ...



## BCH ELECTRIC LIMITED

Visit us at : [www.bchindia.com](http://www.bchindia.com)

**Corporate Office :** 1105, New Delhi House, 27, Barakhamba Road, New Delhi-110 001 Tel. : 91-11-23316029/3610/6539/43673100 Fax : 91-11-23715247 E-mail : [marketing@bchindia.com](mailto:marketing@bchindia.com)

**Registered Office :** Block 1E, 216, Acharya Jagadish Chandra Bose Road, Kolkata - 700 017

**Works 1 :** 20/4, Mathura Road, Faridabad-121 006 (Haryana) Tel. : 0129-4063000/4293000 Fax : 0129-2304016

**Works 2 :** 64-68, Sector-7, IIE, Pant Nagar, Rudrapur, Udham Singh Nagar - 263 153 (Uttarakhand) Tel. : 05944-250214/16 Fax : 05944-250215

### Sales Offices :

#### Ahmedabad

93, City Centre,  
Near Swastik Char Rasta,  
C.G. Road, Navrangpura,  
Ahmedabad-380 009  
Tel. : 079-26565719/40074482  
Fax : 079-26565719  
E-mail : [ahmedabad@bchindia.com](mailto:ahmedabad@bchindia.com)

#### Bangalore

B.M.H. Complex, 2nd Floor,  
No. 22, Kengal Hanumanthiah Road,  
Bangalore - 560 027  
Tel. : 080-22273478/41144878/41144879  
Fax : 080-22236759  
E-mail : [bangalore@bchindia.com](mailto:bangalore@bchindia.com)

#### Chandigarh

SCO 121-22-23, 1st Floor,  
Sector 34-A, Chandigarh - 160 022  
Tel. : 0172-5078957/2666122  
Fax : 0172-5049905  
E-mail : [chandigarh@bchindia.com](mailto:chandigarh@bchindia.com)

#### Chennai

Flat No. 3A, 3rd Floor,  
Sree Apartments,  
No.508, TTK Road,  
Alwarpet, Chennai 600 018  
Tel. : 044-24337046, 24337047  
Fax : 044-24337047  
E-mail : [chennai@bchindia.com](mailto:chennai@bchindia.com)

#### Coimbatore

87, Dr. Nanjappa Road,  
Coimbatore - 641 018  
Tel. : 0422-2305311  
Fax : 0422-2302599  
E-mail : [coimbatore@bchindia.com](mailto:coimbatore@bchindia.com)

#### Faridabad

20/4, Mathura Road,  
Faridabad - 121 006 (Haryana)  
Tel. : 0129-2304016  
E-mail : [faridabad@bchindia.com](mailto:faridabad@bchindia.com)

#### Hyderabad

1-8-303/48/13/102, Arya One,  
2nd Floor, P. G. Road,  
Secunderabad - 500 003  
Tel. : 040-66206263/27890306  
Fax : 040-66207273  
E-mail : [hyderabad@bchindia.com](mailto:hyderabad@bchindia.com)

#### Indore

330-331, Indraprastha Tower,  
3rd Floor, 6, M.G. Road,  
Indore - 452 001  
Tel. : 0731-2510011  
Fax : 0731-2510012  
E-mail : [indore@bchindia.com](mailto:indore@bchindia.com)

#### Jaipur

25, Halthroi, Gopalbari,  
Jaipur - 302 001  
Tel. : 0141-5104521  
Fax : 0141-2363521  
E-mail : [jaipur@bchindia.com](mailto:jaipur@bchindia.com)

#### Jamshedpur

3rd Floor, Aastha Trade Centre,  
'Q' Road, Bistupur,  
Jamshedpur - 831 001  
Tel. : 0657-2756171/2756157  
E-mail : [jamshedpur@bchindia.com](mailto:jamshedpur@bchindia.com)

#### Kolkata

East India House, 3rd Floor,  
20-B, Abdul Hamid Street,  
Kolkata - 700 069  
Tel. : 033-22138508-12  
Fax : 033-22138511  
E-mail : [kolkata@bchindia.com](mailto:kolkata@bchindia.com)

#### Lucknow

Madan Plaza, 3rd Floor,  
14, Station Road,  
Lucknow - 226 001  
Tel. : 0522-4025597/4025997  
Fax : 0522-4025697  
E-mail : [lucknow@bchindia.com](mailto:lucknow@bchindia.com)

#### Ludhiana

S.C.O.-18, 2nd Floor,  
Feroze Gandhi Market,  
Ludhiana - 140 001  
Tel. : 0161-5021807/5022808  
Fax : 0161-5021807  
E-mail : [ludhiana@bchindia.com](mailto:ludhiana@bchindia.com)

#### Mumbai

A-151, Mittal Tower,  
Nariman Point,  
Mumbai - 400 021  
Tel. : 022-22822947/22826039  
Fax : 022-22822858  
E-mail : [mumbai@bchindia.com](mailto:mumbai@bchindia.com)

#### Nagpur

3rd Floor, "Paradise Plaza",  
Kadbi Chowk,  
Nagpur - 440 004,  
Tel. : 0712-2041518  
Telefax : 0712-2041670  
E-mail : [nagpur@bchindia.com](mailto:nagpur@bchindia.com)

#### New Delhi

801, Akash Deep Building,  
26A, Barakhamba Road,  
New Delhi - 110 001  
Tel. : 011-23313878/66307065  
Fax : 011-23739230  
E-mail : [delhi@bchindia.com](mailto:delhi@bchindia.com)

#### Pune

8, Sarosh Bhavan,  
16-B/1, Dr. Ambedkar Road,  
Pune - 411 001  
Tel. : 020-26052590  
Telefax : 020-26135224  
E-mail : [pune@bchindia.com](mailto:pune@bchindia.com)

#### Raipur

2nd Floor, Building No. B-234,  
Indira Gandhi Vyvasayik Parisar,  
Pandri, Raipur - 492 004  
Tel. : 0771-4020213  
Fax : 0771-2582680  
E-mail : [raipur@bchindia.com](mailto:raipur@bchindia.com)

#### Surat

601/A,  
21st Century Business Centre,  
Ring Road, Surat - 395 002  
Tel. : 0261-2331840  
Fax : 0261-2331841  
E-mail : [surat@bchindia.com](mailto:surat@bchindia.com)

#### Trichy

Kingsstone Park, 2nd Floor,  
19/1, Puthur High Road,  
Ramalinga Nagar,  
Trichy - 620 017  
Tel. : 0431-4040497  
E-mail : [trichy@bchindia.com](mailto:trichy@bchindia.com)

#### Vadodara

301, Third Floor, "Florence Classic",  
10, Ashapuri Co-Op. Hsg. Soc. Ltd., Opp. VUDA Housing,  
Near Cow Circle, Akota, Vadodara - 390 020  
Tel. : +91-265-6548444/2345068/2345069  
Telefax : 0265-2345068,  
E-mail : [vadodara@bchindia.com](mailto:vadodara@bchindia.com)

### Other Branch Locations

**Bhubaneswar :** [bhubaneswar@bchindia.com](mailto:bhubaneswar@bchindia.com), **Cochin :** [cochin@bchindia.com](mailto:cochin@bchindia.com), **Dehradun :** [dehradun@bchindia.com](mailto:dehradun@bchindia.com), **Gurgaon :** [gurgaon@bchindia.com](mailto:gurgaon@bchindia.com), **Guwahati :** [guwahati@bchindia.com](mailto:guwahati@bchindia.com),  
**Hospet :** [hospet@bchindia.com](mailto:hospet@bchindia.com), **Hubli :** [hubli@bchindia.com](mailto:hubli@bchindia.com), **Madurai :** [madurai@bchindia.com](mailto:madurai@bchindia.com), **Vishakapatnam :** [vizag@bchindia.com](mailto:vizag@bchindia.com)

### Resident Engineer Locations

Baddi	Gurgaon	Madurai	Salem
Bardhaman	Haridwar	Muzaffarnagar	Udaipur
Bhilai	Hubli	Nashik	Vapi
Bhubaneswar	Hospet	Patna	Vishakapatnam
Cochin	Jodhpur	Puducherry	Warangal
Dehradun	Kakinada	Rajkot	
Durgapur	Kota	Rajahmundry	

Since product improvement is a continuous process, the data furnished in this brochure may undergo revision without prior notice.